

Excavations in Mumrills Fort at 13 Sandyloan Crescent in 2026

Geoff B Bailey

Introduction

With the kind permission of the owners, archaeological exploration at 13 Sandyloan Crescent in Laurieston continued for a second season in June 2026. Three trenches were excavated in the area of the lawn (NS 9174 7941) to the south of the house, with a broad paved patio

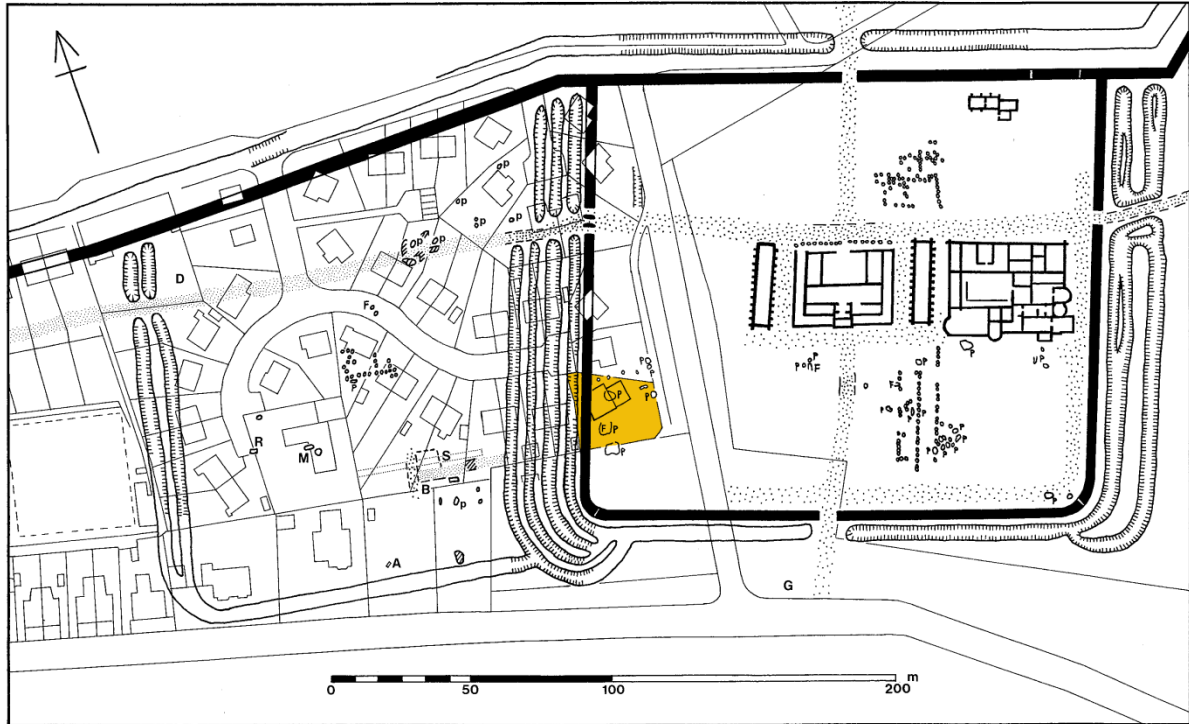


between them and the house. Trench 1 was coterminous with that dug in 2025 and extended eastward for another 11m. Its shape was determined by the space available which narrowed to the east due to the property boundaries and the presence of a greenhouse and shed. A small intake was left in order to avoid part of a large modern gravel pit. Trench 2 was dug to its south and was 5.5m long and 2m wide. Finally, Trench 3 was dug to the north of Trench 1 once its spoil tip had been removed. It ran along the east side of the patio.

Illus: General View of the Excavation looking South-West.

The area investigated lies at the top of the west/east ridge occupied by the Antonine Wall fort of Mumrills and to the north the ground slopes steeply down to the Wall which forms the northern side of the fort. Indeed, the land also falls away to the west and east, though much more gently.

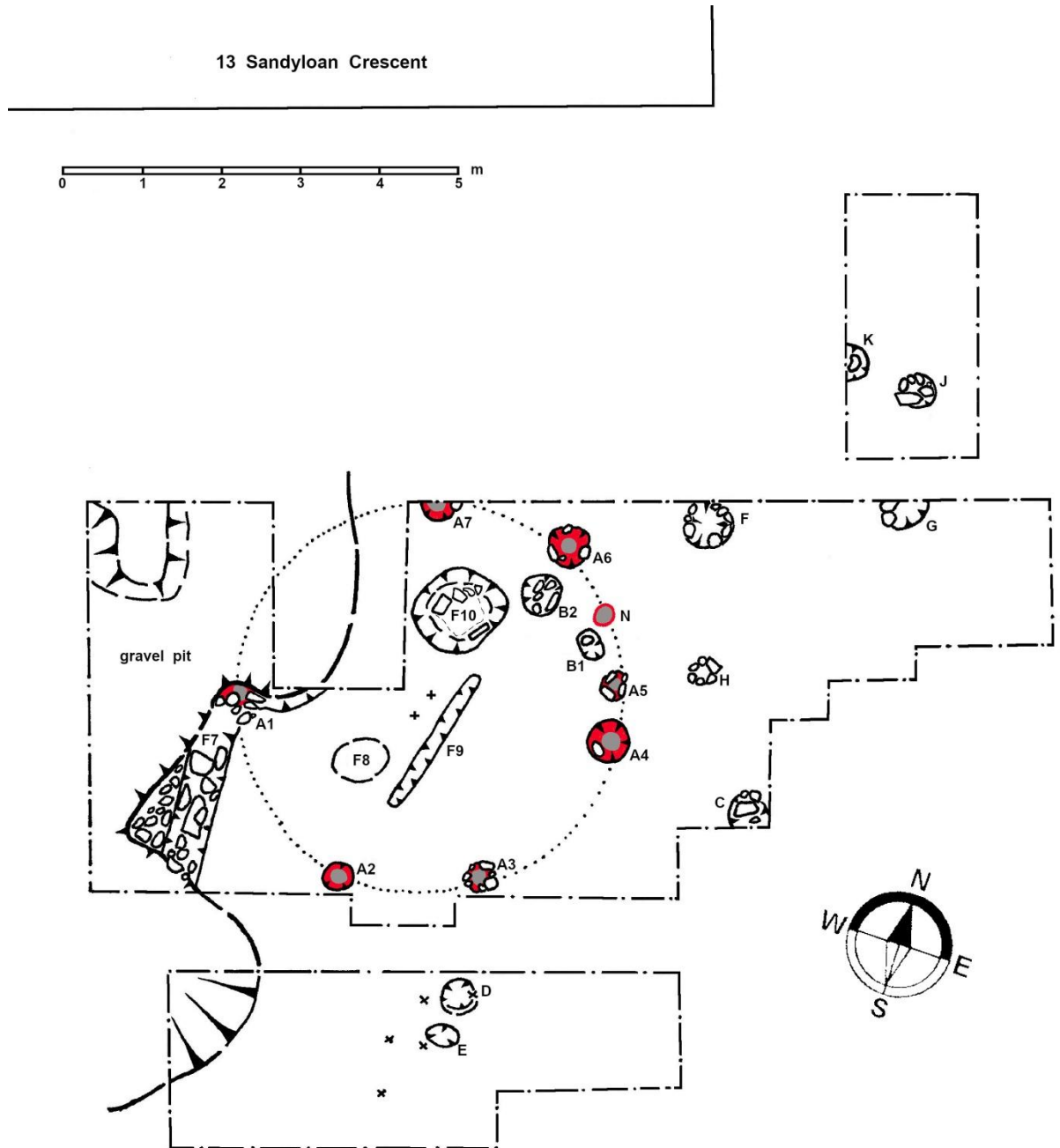
Excavations at 13 Sandyloan Crescent 2026



Illus: Plan of Mumrills Fort and Annexe with Roman Features overlaid onto a Modern Map. The solum of 13 Sandyloan Crescent is shown in yellow.

Due to the fact that the site lies at the apex of a hill which had been ploughed for centuries there was little horizontal stratigraphy which made it impossible to determine chronological links between features and it was necessary to rely upon spatial analysis for that purpose. The topsoil was only 0.3-0.38m deep, below which was a thin orange-brown sandy loam plough soil which gave way over most of the site to free-draining orange gravel and grit. The total overburden therefore varied from only 0.35m at the east end of Trench 1 to 0.50m at the west. A pit and numerous post-holes had been filled with dark brown sandy loam, many containing rounded pebbles as packing as well as the occasional piece of daub and pottery sherd. Some of the packing stone stood proud of the top of the natural gravel, a sure sign that the Roman ground surface had been lost to ploughing. Indeed, ploughing had dragged gravel over some of these features, making them difficult to locate.

Excavations at 13 Sandyloan Crescent 2026



Illus: Plan of Trenches 1-3 at 13 Sandyloan Crescent.

The west end of Trench 1 was dominated by the large pit (F4) found in 2025. On this occasion it was only excavated to a depth of 1.2m. It had been dig through the natural gravel which consisted of stones from 0.02m to 0.1m in size for the first 0.3m and then became grittier with the occasional larger rounded stone. The pit is one of several in the immediate area depicted on the plan published in the 1929 report of the excavations conducted on behalf of the Society of Antiquaries of Scotland (Macdonald & Curle 1929). It is significantly larger than shown on that plan. The accompanying text on the pits is brief and unspecific. It notes that *“it is more than likely that some of the larger and deeper among them, particularly in the Annexe, had been opened up merely to obtain gravel”* (ibid, 500). An unpublished version of the plan, now in Falkirk Museum, annotates the large pit to the south of F4 as “grave pit” – the first word presumably having lost its terminal letter “l”. F4 contained fragments of 19th century pottery throughout its fill, showing that it had been backfilled at a late date and was presumably dug to obtain gravel (called channel) for the nearby turnpike road from Polmont to Falkirk. The Turnpike Trustees had a legal right to enter fields adjacent to the road to obtain such material

Excavations at 13 Sandyloan Crescent 2026

though this had to be done with the consent of the landowner. In this case the landowner was William Forbes of Callendar, who had taken the Trustees to court in the 1790s to stop the extraction of gravel within the policy grounds of Callendar House. The fill also incorporated a fair number of Roman sherds and pieces of daub derived from furnaces, suggesting that the backfill had been sourced in the area of the annexe to the west.

Illus: Trench 1 looking east on the third day of the Excavation.

The gravel pit (F4) can be seen in the foreground with slot (F7) and post-hole (A1) on its edge.



Illus: Post-hole (A1) with slot (F7) to the right.

The gravel pit cut a post-hole (A1) leaving its lower portion intact. It had stone packing around an area of red oxidised sandy loam and proved to be the first of seventeen post-holes to be found.

Seven of these post-holes, A1-A7, along with post-hole N, formed a perfect circle in plan, the north-west quadrant of which had been removed by the modern gravel pit. The posts were relatively evenly spaced, except that A5 and N filled in the normal gap between A4 and A6. The distance between A3 and A4 was slightly longer than usual and we may assume that it was here that the entrance to the structure lay. This was the east side of the building where we might have expected it to be.

Two post-holes, B1 and B2, within this circular arrangement line up with A5 to form a lesser arc and may represent a rebuild of the structure in this quadrant.

Excavations at 13 Sandyloan Crescent 2026



Illus: Pit and Post-Holes in Trench 1 looking east.

Three features were found inside this circular building. Slot F9 cut across it dividing it into two almost equal parts. The slot was 0.34m broad at the top with nearly vertical sides reaching down 0.12m into the natural. At either end it terminated 0.6m from post-holes B2 and A2, and lay perpendicular to the proposed entrance. Behind this screen, to the north-west, was a pit, F10, and a shallow scoop, F8. The latter was only 0.1m deep and contained comminuted charcoal.

F10 was deeper and more interesting. It was sub-rectangular and its south-east side was parallel to slot F9, filling the gap between the slot and post-hole B2. The pit measured 0.9m N/S by 0.95m W/E at the top, with sides sloping steeply down to the base 0.5m below. Small stone slabs had been positioned to form a rough small chamber. The base stone and the upright slabs at the west and east were of white micaceous sandstone, the other stones were a mix of oxidised sandstone and pebbles.

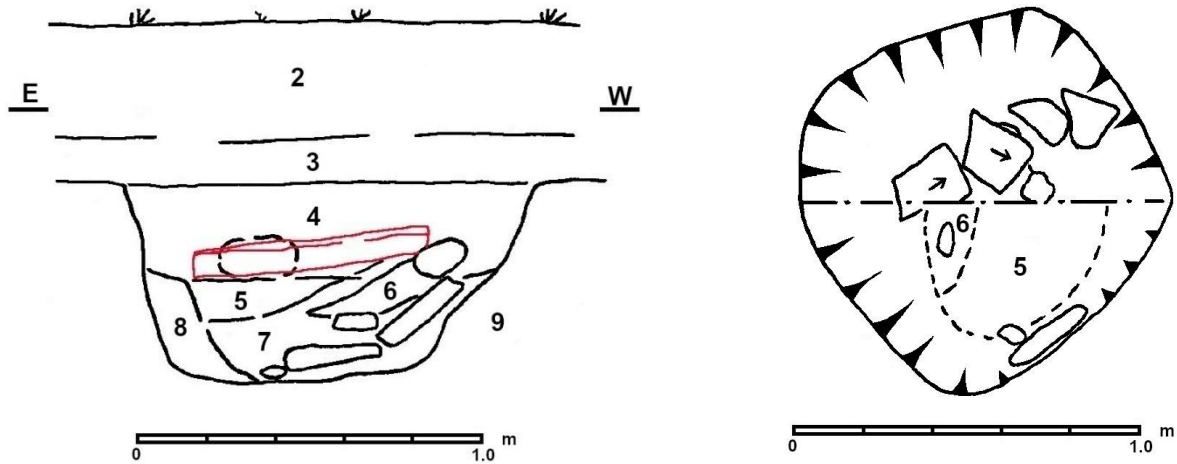


Illus: Votive Pit F10.

Left – Capstone in place; Right - Capstone removed and side slabs exposed.

Outside of this chamber the soil was grey-brown sandy loam and contained a few sherds of Roman pottery. Inside the chamber the lowest fill was a brown-grey silty loam, over which were layers of red sandy loam and bright orange sandy loam containing some small patches of charcoal. These were capped by a large block of dressed sandstone measuring 0.44 by 0.34m and 0.13m thick. It had clearly been placed on the end slabs and the pressure from it had caused it to tilt into the small cavity below causing the stones along one side to collapse under its weight and those on the opposing side to end up lapping over the top of it. It was notable that the area of burning was limited to the rectangular area under the capstone. Low down, on the outer edge of the oxidised soils, at the south-east corner of the rectangle, a 65mm long iron nail was still in situ with its round head on the outside. One other nail and two fragments were also found on the fringes of the burning. This would appear to indicate the former presence of a timber box containing the ashes.

Excavations at 13 Sandyloan Crescent 2026



Illus: Plan and Section of Votive Pit with Capstone in red.

2 - topsoil; 3 - brown-orange sandy loam (plough soil); 4 - dark brown sandy loam; 5 - red sandy loam; 6 - bright orange sandy loam; 7 - brown-grey silty loam, 8 - fawn sandy loam; 9 - orange-yellow gravel & grit (natural).

The layers of ash sloped down from the north-west corner to the south-east one and may have been tilted within the box when the capstone gave way. A few very small pieces of burnt bone, too fragmentary for identification, were found at the top of the ashes and it is possible that they represent a cremation.

Touching upon the west side of A1 was a 0.2m wide slot (F7) cut vertically 0.18m into the gravel natural on the east and redeposited gravel on the west. It contained rounded fist-sized stones as well as the odd angular piece of sandstone surrounded by dark brown sandy loam. Its appearance was similar to that of a palisade slot and it presumably supported a series of upright posts. A similar slot was found in an early phase of the Roman occupation at 18 Sandyloan Crescent in 1995 (F8, Bailey 2021, 254-5). F7 appeared to be earlier than A1. Below the redeposited gravel on the west side of the slot was a layer of rough paving using flattish stones. The sequence at this part of the site was confused by the insertion of the later gravel pit but appears to suggest that a sunken floor (F6) was bounded on the east by a timber wall (F7) and that later the floor was raised by dumping gravel inside the building leaving the wall as a slot.



Illus: Slot F7 and Floor F6.

Excavations at 13 Sandyloan Crescent 2026

In such a relatively small area it is not surprising that it is difficult to make a meaningful pattern from the post-holes outside of the hut circle. Post-hole F lines up with D and E, and incidentally with A4, to form a line which would have been parallel with the west rampart of the Antonine Wall fort. A line drawn through C and G would be parallel and 2m to the east of that. In this part of the fort we might expect to find timber barracks. 2m would be too small for either the front or back room of such a barrack block, but would be suitable for a veranda facing another barrack across an internal road, turning its back on the busy intervallum road.

Discussion

The excavation has clarified the nature of the large pits in the south-west corner of the Antonine Wall fort at Mumrills. They were early nineteenth century gravel pits.

Unfortunately, there was little by way of stratigraphic relationships which might have allowed us to examine the postulated phases within the Roman period and in particular the vexed question of a pre-Wall fort (Bailey 2010). The earliest Roman feature appears to have been the wide slot, F7, and the associated cobbled floor (F6). The nature and orientation of the slot would be consistent with the early fort on the site. Similarly, the postulated lines of a timber barrack block would be typical of the second fort – but this is speculation.

The appearance of a round timber structure in the fort is unexpected. The surviving eight post-holes form a building 4.5m in diameter with a possible entrance to the east as is often found in Iron Age huts or Romano-Celtic temples. It is considerably smaller than the 14.5m diameter ring-groove structure excavated at Weedingshall just 0.9km to the east (Dunbar 2025, 23), but larger than the 4.1m diameter ring-groove immediately behind the Antonine Wall at Mary Square in Laurieston 0.75km to the west (Dunwell et al 2002, 265). These two ring-groove structures date to around the time of the Antonine occupation. The Weedingshall example produced a radiocarbon date of 48 cal BC 116 cal AD (at 95% probability) and the Mary Square structure was cleared away for the construction of the Antonine Wall in the early 140s AD. They had no post-holes associated with them and ring-grooves tend to predominate in Central Scotland during the Iron Age. The circular structure at Mumrills is therefore an anomaly, which may be due to its association with the Romans.

The date of the Mumrills “roundhouse” is open to debate. The internal features such as the slot and pit F10 make it unusual. The pit contained a carefully prepared stone chamber capped by a large dressed sandstone block. Second century pottery incorporated into the fill of the pit and two of the post-holes gives us a *terminus post quem* of the Antonine period. The evidence does not confirm a second century date for the pit but leans towards that direction. The capstone must have been prepared by the Roman army building the fort at Mumrills for a large building, such as a gatehouse or one of the central range of buildings which included the principia. It was dressed so that it could form a tightly-jointed course in such a construction. This might suggest that it could only have been re-used after the demolition of such a structure (cf the large stone found at Fort Knowe near the south gate, Bailey 2021b) and that consequently the pit, F10, was immediately post-Roman. However, the capstone from F10 did not have an edging with a dressed face and so may not have been used. In any case, dressed stone was reused in the culvert under the rampart at the nearby south-west corner of the Wall period fort (Macdonald & Curle 1929, 409-411). The use of a nailed wooden box suggests that it was deposited within the Roman period.

The function of this carefully prepared chambered pit is obviously important to the question of date. The burning and fragments of bone suggest that it may have been a cremation – though whether human or not is unknown. The location and character of the pit suggest that

Excavations at 13 Sandyloan Crescent 2026

it was votive in nature and the unusual shape of the building may indicate that it was either a mausoleum or a temple. Approaching from the east the visitor would have entered a lobby separated from the inner sanctum by a screen partition, behind which was the votive offering. The right-hand side of the building on the approach to the pit had been given more upright posts than normal. That this was significant is shown by the fact that they were replaced or augmented by postholes B1 and B2 on an inner curve.

FINDS

The Pottery and Daub

In all some 164 sherds of pottery were recorded, most of which were Roman. 9 sherds of samian, all plain, were recovered. As usual the forms 31 or 18/31 were the most common. At 52 sherds, black-burnished was numerically the most frequent type encountered with bowls being better represented than jars. Mortaria sherds formed a higher proportion of the assemblage than usual, there being 18 sherds. This was also the case with the material from 11 Sandyloan Crescent. The area may therefore have been used for food preparation and it is notable that many of the black-burnished vessels were badly burnt (though that may have occurred during the demolition of the fort upon abandonment). The 2,787g of amphora sherds of Dr20 provide a normal background count.

The bulk of the pottery came from the lower plough soil (F3), though the modern gravel pit was also a plentiful source. Little of this was worn suggesting that it was not being continuously moved. The farmer latterly evidently kept his plough above the level of the gravel, which is confirmed by the packing stones in the post-holes protruding above the natural. The material from the gravel pit included fragments of daub derived from kiln structures as well as some iron slag, indicating that the soil used to backfill the pit was derived from the annexe to the west.

1,265g of burnt daub were collected. Some of this had been used in kilns as shown by its curved and laminated form, and the occasional lining of iron. Most probably came from the demolition of timber buildings.

Mortaria



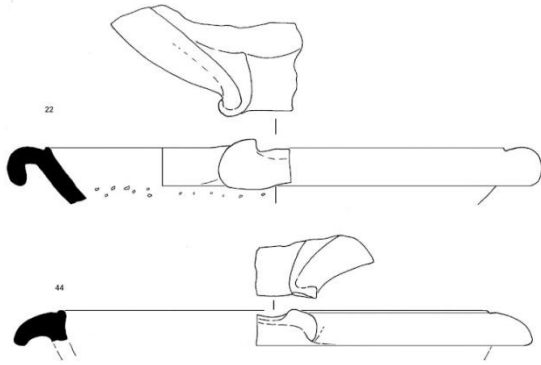
Illus: Stamp and Section of Mortarium 1 (scale 1:4).



1. 1 rim sherd in hard brick red fabric, stamped “-CVV”.

The stamp is confined to the limits of the surviving fragment and may represent the second line of the whole text. It reads from the raised bead and is previously unrecorded. The third letter is worn and may be an “N”. It is therefore possible that the “EVNI” stamp recorded from Camelon (Christison & Buchanan 1901, 393) is a misreading of the same stamp. The fabric is similar to that of a misfired rim found at Mumrills during recent fieldwalking and which Kay Hartley considered as a possible waster from a local kiln. This is the same fabric as those of Group C which she had previously postulated as being manufactured at Mumrills (Hartley 1976). The rim conforms to those now in the National Museum (ibid, 86-87). F3, 2026-2-72





Illus: Mortaria 2 & 3 (scale 1:4).

2. Rim sherd and spout in hard brick-red fabric with cream-buff slip. F3, 2026-2-22.

3. Rim sherd and spout in hard brick-red fabric with cream-buff slip. F3, 2026-2-44.

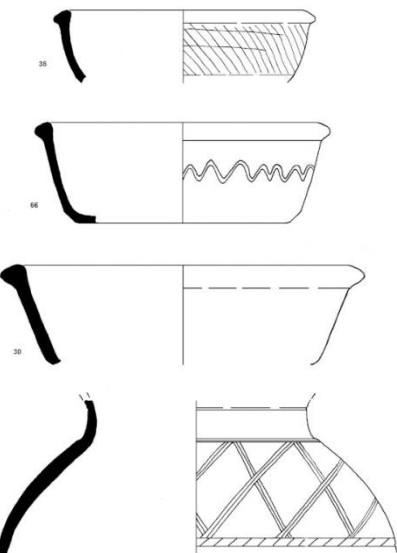
4. Two body sherds in similar fabric to 1-3. F1 & F3, 2026-2-54 & 73.

Three sherds in cream fabric probably from

Verulamium 2026-2-79 & 88.

There are also several sherds in a soft orange fabric 2026-2-22, 54, 90, and in a hard buff fabric.

Black-Burnished & Grey Wares



Illus: Black-Burnished Bowls (scale 1:4).

1. Rim of a bowl with diagonal decoration, and horizontal grooves, cf small version of Gillam 1961, 40. F4, 2026-2-38.

2. Complete profile of a bowl with wavy line decoration, cf Anderson 1985, 154. F3, 2026-2-66.

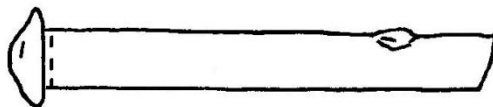
3. Bowl with triangular rim dark grey fabric in imitation of Gillam 1961, 42. F2, 2026-2-30.

Illus: Greyware Jar (scale 1:4).

4. Shoulder of a jar in dark grey fabric with a broad band of triple line open lattice decoration. The form imitates Severn Valley Ware. cf Ford 2003, 162 for a cordon of lattice decoration on the lower shoulder of a similar jar.

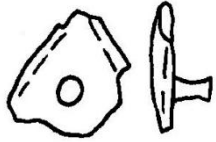
F15, 2026-2-63.

Copper Alloy Objects



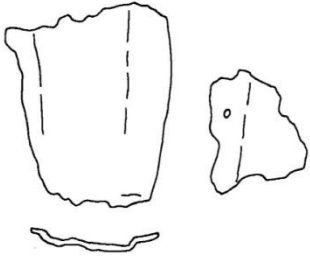
Illus: Pin (scale 1:1)

Pin with oval-sectioned shaft (9 x 5mm), 79mm long (broken) and an oval head. Probably medieval. F3, 2026-2-122.



Illus: Stud (scale 1:1)

Stud – Copper alloy stud with triangular head (15mm sides) having chamfered edges and a circular-sectioned shank, 6mm long. Possibly a Roman furniture fitting. F1, 2026-2-123.



Iron

Illus: Iron sheet Object from the slot (scale 1:2).

Wrought iron plate with slightly tapering indented margins, possibly a dagger sheath. F7, 2026-2-19.

Stone

1. Whetstone. Section of a bi-sandstone whetstone, L.37mm. It is other whetstone from Roman sites Antonine Wall. F1, 2026—2-86.



convex similar to along the

Illus: The Masonry Block.

2. Masonry block. A large dressed block of sandstone was used as the capstone of a chamber in the votive pit, F10. It is roughly rectangular and measures 0.44 by 0.34m and is 0.13m thick. The larger faces are flat. One side has 13 diagonal chiselled lines and here one of the long sides has a more finely dressed margin similar to that on the dressed stone from Fort Knowe (Bailey 2021b). The other side is slightly rougher with chiselled dashes. The edges are rough and unfinished.

The stone was evidently dressed with flat faces to form a horizontal course in a large stone structure but none of its edges were squared. This might suggest that it was not used for its original purpose.

Bibliography

Anderson, A.C.	1989	'The other Roman Pottery' in Frere & Wilkes 1989, 243-265.
Bailey, G. B.	2010	'An early Antonine fort at Mumrills', Proc Soc Antiq Scot, 140 (2010), 93-103.
Bailey, G. B.	2021a	The Antonine Wall in Falkirk District.
Bailey, G. B.	2021b	Excavations at Fort Knowe, Mumrills, 2021
Christison, D. & Buchanan, M	1901	'Account of the excavation of the Roman station of Camelon, near Falkirk, Stirlingshire, undertaken by the Society in 1900', Proc Soc Antiq Scot, 35 (1900-01), 329-417.

Excavations at 13 Sandyloan Crescent 2026

Dunwell, A., Bailey, G., Leslie, A. & Smith, A.	2002	'Some excavations on the line of the Antonine Wall, 1994-2001', <i>Proc Soc Antiq Scot</i> , 132 (2002), 259-304.
Ford, B	2003	'Coarse Pottery', in Holmes, N. 2003.
Frere, S. S. & Wilkes, J. J.	1989	Strageath: Excavations within the Roman Fort 1973-86, <i>Britannia Monograph 9</i>
Gillam, J. P.	1961	'The Coarse Pottery', in Steer 1961a.
Gillam, J. P.	1970	<i>Types of Roman Coarse Pottery Vessels in Northern Britain</i> , 3 rd ed
Hartley, K. F.	1976	'Were mortaria made in Roman Scotland?' <i>Glasgow Archaeol J</i> , 4 (1976, Studies in Roman Archaeology for Anne S Robertson), 81-89.
Holmes, N.	2003	Excavation of Roman Sites at Cramond, Edinburgh. <i>Soc Antiq Scot</i> , Monograph 23.
Macdonald, G. & Curle, A. O.	1929	'The Roman Fort at Mumrills, near Falkirk', <i>Proc Soc Antiq Scot</i> , 63 (1928-29), 396-575.
Steer, K. A.	1957	'The Nature and Purpose of the Expansions on the Antonine Wall', <i>Proc Soc Antiq Scot</i> , 90 (1956-57), 161-169.
Steer, K. A.	1961	'Excavations at Mumrills Roman Fort, 1958-60', <i>Proc Soc Antiq Scot</i> 94 (1960-61), 86-132.

Acknowledgements

We would like to thank Elaine Malcolm and her husband for generously allowing us to dug up (and relay) the lawn; and for the many cups of tea consumed during the fortnight.

The dig would not have been possible without the following helpers - Mark Bailey, Jean Baxter, Matthew Connors, Marianne Doyle, Stacey Duffy, Peter Dunn, Richard Gillanders, Bruce Harvey, Ian Hawkins, Janet Kinniburgh, Michael Linman, Ian McAdams, Donald McLeish, Kenny McLeish, and Barry Mair.

Table of Finds

CONTEXT	TYPE	DESCRIPTION	ACC. NO.	PERIOD
1, day 5	samian	1 small base sherd from a platter, L.31mm	2026-2-1	R
1, day 5	flagon?	1 body sherd in orange-buff fabric, L.72mm.	2026-2-2	R
12, day 7	amphora	2 joining body sherd of Dr.20. 630g.	2026-2-3	R
3, day 5	black-burnished ware	1 base sherd from a dish, L.40mm.	2026-2-4	R
3, day 5	mortarium	1 base sherd in buff-orange fabric with cream external slip, L.50mm.	2026-2-5	R
3, day 5	black-burnished ware	2 small body sherds (1 burnt).	2026-2-6	R
3, day 5	daub	1 piece, 30g.	2026-2-7	R

Excavations at 13 Sandyloan Crescent 2026

CONTEXT	TYPE	DESCRIPTION	ACC. NO.	PERIOD
10, day 5	black-burnished ware	2 joining base sherds from a dish.	2026-2-8	R
10, day 5	mortarium	1 rim sherd in hard red-brown fabric (over-fired), L.62mm.	2026-2-9	R
12, day 3	nail	Wrought iron nail with head, L.53mm.	2026-2-10	R
12, day 3	daub	1 small piece, 6g.	2026-2-11	R
12, day 3	oxidised ware	1 body sherd (burnt?)	2026-2-12	R
12, day 3	black-burnished ware	1 burnt base sherd of a jar.	2026-2-13	R
2, day 3	black-burnished ware	2 body sherds of a jar, burnt with external sooting.	2026-2-14	R
2, day 3	oxidised ware	1 rim (probably burnt samian), 1 small body sherd in buff-orange fabric.	2026-2-15	R
2, day 3	nail	1 hobnail.	2026-2-16	R
2, day 3	daub	5 pieces, 37g.	2026-2-17	R
7, day 3	samian	1 plain body sherd of form 18/31, L.45mm.	2026-2-18	R
7, day 3	Iron object	1 wrought iron plate with indented margins.	2026-2-19	R
7, day 3	daub	1 thin heavily burnt piece, 11g.	2026-2-20	R
3, day 3	samian	1 beaded rim sherd for 18/31 or 31, L.50mm.	2026-2-21	R
3 day 3	mortarium *	1 rim sherd with half the pouring spot in hard brown-red fabric and a cream internal slip, white grit. L.95mm. 1 body sherd in orange-buff fabric with large red-brown grit, also grey and white angular grit. 1 worn body sherd, possibly of a mortarium in buff fabric.	2026-2-22	R
3, day 3	amphora	10 body sherds of Dr 20, 284g.	2026-2-23	R
3, day 3	daub	6 pieces, 122g.	2026-2-24	R
3, day 3	black-burnished ware	1 tiny body sherd, 2 base sherds, 1 heavily burnt cavetto rim sherd from a jar.	2026-2-25	R
3, day 3	white gritty ware	1 thick body sherd	2026-2-26	M
3 day 3	green-glazed ware, oxidised	1 small body sherd.	2026-2-27	PM
7, day 4	iron object *	1 piece of thin wrought iron plate with a small perforation – same as No.19.	2026-2-28	R
7, day 4	charcoal	1 small piece.	2026-2-29	R
7, day 2	black-burnished ware *	1 large rim sherd of a bowl in imitation BB with no decoration, cf Gillam 1961, 42.	2026-2-30	R
2, day 2	black-burnished ware	1 small body sherd with lattice decoration, 1 small thin body sherd, 1 burnt body sherd.	2026-2-31	R
2, day 2	amphora	1 body sherd Dr20, 44g.	2026-2-32	R
2, day 2	daub	9 pieces, 118g.	2026-2-33	R

Excavations at 13 Sandyloan Crescent 2026

CONTEXT	TYPE	DESCRIPTION	ACC. NO.	PERIOD
2, day 2	greyware	1 base sherd from a platter in pale grey fabric with micaceous black slip – imitation samian form 18/31 or 31. L.34mm.	2026-2-34	R
2, day 1	samian	1 small body sherd, L.28mm.	2026-2-35	R
4, day 2	samian	2 foot-ring sherds.	2026-2-36	R
4, day 2	greyware	1 body sherd in pale blue-grey fabric.	2026-2-37	R
4, day 2	black-burnished ware *	1 rim sherd with diagonal decoration, & grooves, cf small version of Gillam 1961, 40. 5 body sherds from a jar with external sooting.	2026-2-38	R
4, day 2	amphora	5 body sherds, 250g.	2026-2-39	R
4, day 2	daub	17 pieces, 181g (1 is a thin curving piece from a kiln, 1 has iron face from a kiln).	2026-2-40	R
4, day 2	iron	5 nails, 7 hobnails, 1 cleat.	2026-2-41	R & ?
4, day 2	slag	2 large pieces of iron slag.	2026-2-42	R
4, day 2	white gritty ware	1 small body sherd with cream external face.	2026-2-43	M
3, day 2	mortarium	Half of a pouring spout in similar fabric to No. 22. L.60mm.	2026-2-44	R
3, day 2	hobnail	1 hobnail.	2026-2-45	R
3, day 2	tile	1 piece of pantile – not retained.	2026-2-46	R
3, day 2	black-burnished ware	1 body sherd with lattice decoration, 1 small body sherd, 1 burnt body sherd.	2026-2-47	R
3, day 2	amphora	7 body sherds Dr.20, 389g.	2026-2-48	R
3, day 2	daub	16 pieces, 176g.	2026-2-49	R
3, day 2	white gritty ware	1 small body sherd.	2026-2-50	M
3, day 2	green-glazed ware; oxidised	2 thick base sherds of a jar & 1 body sherd.	2026-2-51	PM
3, day 2	coarseware	1 sliver in buff fabric.	2026-2-52	R?
1	samian	1 beaded rim sherd, form 37, L.35mm.	2026-2-53	R
1	mortarium	1 body sherd in hard brick-red fabric with dark grey core & cream slip, grey & brown grits, L.45mm.	2026-2-54	R
1	mortarium	1 body sherd in soft orange fabric with small white, brown & grey grit and a cream slip.	2026-2-55	R
1	Flagon?	1 body sherd in buff fabric with cream external slip.	2026-2-56	R
1	greyware	1 thick cavetto rim sherd of a jar, burnt. L.53mm.	2026-2-57	R
1	black-burnished ware	1 heavily burnt body sherd.	2026-2-58	R
1	Lead object	1 roughly conical lead object with oval central perforation, 19 x 12mm by 7mm high. Probably a weight.	2026-2-59	?
2, day 8	greyware	1 body sherd.	2026-2-60	R
2, day 8	black-burnished ware	1 heavily burnt down-turned rim sherd, 1 thick body sherd.	2026-2-61	R

Excavations at 13 Sandyloan Crescent 2026

CONTEXT	TYPE	DESCRIPTION	ACC. NO.	PERIOD
15, day 8	black-burnished ware	1 body sherd from a bowl with lattice decoration.	2026-2-62	R
15, day 8	greyware	1 large shoulder sherd from a jar with a broad band of triple line open lattice decoration. The form imitates Severn valley Ware. cf Ford 2003, 162 for a cordon of lattice decoration on the lower shoulder of a similar jar.	2026-2-63	R
15, day 8	daub	3 pieces, 23g.	2026-2-64	R
15, day 8	coke	1 small piece of aerated coal.	2026-2-65	R
3, Trench 3, day 11	black-burnished ware	Complete profile of a bowl with wavy line decoration, cf Anderson 1985, 154.	2026-2-66	R
3, Trench 3, day 11	black-burnished ware	1 burnt body sherd.	2026-2-67	R
3, Trench 3, day 11	flagon	1 triple-ribbed handle shed in cream fabric. W.30mm.	2026-2-68	R
3, Trench 3, day 11	hobnail	1 hobnail.	2026-2-69	R
3, trench 3, day 11	white gritty ware	2 joining body sherds in thin cream fabric.	2026-2-70	M
14, day 7	charcoal	1 piece.	2026-2-71	R
3, trench 2, day 6	mortarium	1 rim sherd in hard brick red fabric, stamped “-CVV”	2026-2-72	R
3, Trench 2, day 6	mortarium	1 body sherd in brick-red fabric with a grey core & cream slip, angular white, grey and brown grit.. L.55mm.	2026-2-73	R
3, Trench 2, day 6	black-burnished ware	1 rim sherd with a plain body, cf Gillam 1961, 47; 1 rim sherd with 2 burnished lines on the rim top & lattice decoration on the body, cf Anderson 1985, 205; 1 burnt down-turned rim sherd of a bowl; 2 small heavily burnt thin cavetto rim sherds from a jar.; 2 body sherds & 1 base sherd.	2026-2-74	R
3, Trench 2, day 6	amphora	1 body sherd, 25g.	2026-2-75	R
3, trench 2, day 6	daub	16 pieces, 146g.	2026-2-76	R
3, trench 2, day 6	beaker	1 small thin body sherd in orange fabric with grey-brown roughcasting, L.28mm.	2026-2-77	R
2, Trench 2, day 6	green-glazed ware	1 rim sherd in hard buff fabric with splashes of glaze on the exterior, L.31mm.	2026-2-78	M
3, day 8	mortarium	1 small rim sherd & 1 body sherd in cream/buff fabric with small white grit – Verulamium.	2026-2-79	R
3, day 8	black-burnished ware	1 body sherd with lattice decoration from a jar.	2026-2-80	R
3, day 8	white gritty ware	1 body sherd	2026-2-81	M
3, day 8	daub	6 pieces, 93g	2026-2-82	R
2, day 7	daub	1 piece, 31g	2-26-2-83	R

Excavations at 13 Sandyloan Crescent 2026

CONTEXT	TYPE	DESCRIPTION	ACC. NO.	PERIOD
2, day 7	black-burnished ware	1 small rim sherd; 1 small rim sherd (Falkirk Ware?).	2026-2-84	R
2, day 7	green-glazed ware	1 small body sherd in hard bright orange fabric with external glaze.	2026-2-85	PM
1, day 10	whetstone	Section of a bi-convex sandstone whetstone, L.37mm.	2026-2-86	R?
1, day 10	amphora	1 body sherd Dr20, 87g.	2026-2-87	R
1	mortarium	1 worn body sherd in off-white fabric. L.50mm.	2026-2-88	R
3	samian	1 tiny rim sherd from a thin-walled vessel, L.16mm.	2026-2-89	R
3	mortarium	1 small battered rim sherd in orange fabric with grey core, L.35mm. 1 body sherd in hard brick-red fabric with small white, grey & black grit. L.34mm.	2026-2-90	R
3	beaker	1 rim sherd in thin brown-orange fabric, L.25mm.	2026-2-91	R
3	black-burnished ware	1 rim sherd of a bowl, cf Gillam 1961, 40; 1 rim sherd ditto, heavily burnt; 1 small cavetto rim sherd; 4 burnt body sherds.	2026-2-92	R
3	greyware	3 small body sherds.	2026-2-93	R
3	amphora	8 body sherds, 204g.	2026-2-94	R
3	daub	15 pieces, 200g.	2026-2-95	R
2	daub	3 pieces, 62g.	2026-2-96	R
2	amphora	1 body sherd, 64g.	2026-2-97	R
2	tile	1 piece of pantile, not retained.	2026-2-98	PM
3	pipe; tobacco	2 short 18 th century pipe stems, not retained.	2026-2-99	PM
3	green-glazed ware; reduced	1 spout from a jug, 1 rim sherd, 1 body sherd.	2026-2-100	PM
3	green-glazed ware; oxidised	1 small body sherd.	2026-2-101	PM
3	coarseware	1 small body sherd in hard orange-brown fabric.	2026-2-102	R?
3	mortarium	1 rim sherd (outer edge missing) in over-fired hard brick red fabric giving black faces, angular brown & grey grit. L.53mm. 1 rim sherd in soft orange fabric (outer edge missing) with large white grot still proud of face.	2026-2-103	R
10	amphora	6 joining body sherds Dr 20, 226g.	2026-2-104	R
10	daub	2 pieces, 19g.	2026-2-105	R
10	flagon?	7 shattered pieces in hard orange-red fabric with cream slip.	2026-2-106	R
10	nail	1 wrought iron nail.	2026-2-107	R

Excavations at 13 Sandyloan Crescent 2026

CONTEXT	TYPE	DESCRIPTION	ACC. NO.	PERIOD
10	bone	4 small fragments.	2026-2-108	R
10	charcoal	Tiny amount.	2026-2-109	R
2, day 9	amphora	1 body sherd Dr20, 104g.	2026-2-110	R
2, day 9	white gritty ware	1 base sherd.	2026-2-111	R
2, day 9	coarseware	1 thin body sherd in cream-buff fabric.	2026-2-112	R?
10, day 10	amphora	1 large body sherd Dr20; 1 body sherd with "V" incision – total 417g.	2026-2-113	R
10, day 10	coarseware	1 delaminated sliver – perhaps from a burnt amphora.	2026-2-114	R
10, day 10	daub	1 piece, 2g.	2026-2-115	R
10, day 10	nail	1 wrought iron nail with round head, L65mm; 1 nail fragment.	2026-2-116	R
10, day 10	coal	2 tiny pieces of coal.	2026-2-117	
3, day 3	amphora	1 body sherd, 46g.	2026-2-118	R
3, day 3	black-burnished ware	1 burnt body sherd.	2026-2-119	R
3, day 3	coarseware	1 thin body sherd in cream fabric, L.39mm.	2026-2-120	R?
3, day 3	mortarium	1 worn rim sherd in pale buff-orange fabric, 1.63mm; 1 worn rim sherd in hard brick red fabric.	2026-2-121	R
3	copper alloy pin	Pin with oval-sections shaft (9 x 5mm) 79mm long (broken) & oval head.	2026-2-122	?
1	copper alloy stud	Copper alloy stud with triangular head (15mm sides) with chamfered edges, circular-sectioned shank 6mm long.	2026-2-123	R?
16	daub	1 piece. 6g.	2026-2-124	R
10	black-burnished ware	4 highly burnished base sherds of a platter or large dish.	2026-2-125	R
10	daub	1 piece, 2g.	2026-2-126	R
2, day 9	amphora	1 body sherd, 17g.	2026-2-127	R

R = Roman
M = medieval
PM = post-medieval

Excavations at 13 Sandyloan Crescent 2026

Contexts at a Glance

- 1 – unstratified, spoil heap.
- 2 – topsoil.
- 3 – plough soil – orange-brown sandy loam below topsoil and above natural gravel.
- 4 – gravel pit, dark brown gritty loam, with some stones.
- 6 – Layer of rough paving below redeposited gravel to the west of slot F7.
- 7 – Wide slot cut into gravel natural at the edge of the gravel pit with dark brown loam between fist-sized stones. 0.18m wide and 0.18m deep.
- 8 – shallow scoop or post-hole with comminuted charcoal cut into gravel.
- 9 – Narrow slot to SW of votive pit.
- 10 – votive pit – pit to east of slot F13 to which it is roughly aligned, 1.0 x 0.8m and 0.5m deep. Contained a stone-lined cist with a large capping stone contained burnt (red oxidised) sand.
- 12 – Post-hole D in Trench 2, contained a large amphora sherd, dia. 0.36m, depth 0.24m. Dark brown sandy loam fill, just one stone post packing.
- 14 – post-hole F, almost complete stone packing, 40cm dia, 30cm deep from gravel natural and 66cm from turf. Dark brown sandy loam fill.
- 15 – post-hole A3 with stone packing.
- 16 – post-hole A2 with no stone packing, piece of daub, dark brown sandy loam fill.
- 17- small post-hole N containing comminuted charcoal but no stone packing.

POST-HOLE	DIAMETER	DEPTH FROM NATURAL	DEPTH FROM LAWN	DESCRIPTION
A1	0.22m	0.2m truncated	--	Post packing all round, contained red sandy loam.
A2	0.28m	0.33m	0.76m	No stone packing; 1 small piece of daub.
A3	0.35m	0.32m	0.72m	Post packing round most of it; 2 Roman pottery sherds & 3 pieces of daub.
A4	0.42m	0.20m	--	Odd stone for packing, comminuted charcoal in fill.
A5	0.35m	0.30m	--	Stone packing all round included angular sandstone.
A6	0.40m	0.31m	0.78m	Collapsed stone packing.
A7	0.38m	0.24m	0.67m	Some stone packing.
B1	0.24m	0.18m	--	Sub-rectangular with only one stone.
B2	0.39m	0.27m	---	Disturbed stone packing.
C	0.45m	0.17m	0.58m	One large stone, & several smaller ones forming no pattern.
D	0.36m	0.24m	---	Contained a large amphora sherd, just one stone post packing
E				Oval shape with sloping base, uncertain status.
F	0.40m	0.30m	0.66m	Large post-hole with post packing.

Excavations at 13 Sandyloan Crescent 2026

G	0.48m	0.08m	0.50m	Shallow depth may be due to position of section; two packing stones on west.
H	0.28m	0.20m	---	Almost complete circle of post packing.
J	0.42m	0.23m	---	Complete circle of post packing.
K	0.43m	0.35m	0.72m	Only one stone.
N	0.24m	0.09m	---	Fill of black comminuted charcoal.

All of the post-holes had steep, almost vertical, sides, and contained dark brown sandy loam unless otherwise stipulated.